



OILFIELD SERVICES & SUPPLIES

Assuring Our Best Services At All Times



An internationally recognised leading Oil & Gas manufacturing and service solution provider of the highest standards, and an employer of choice that is committed to quality, health, safety and environmental excellence.

-
- Tianjin
 - Mumbai
 - Sattahip
 - Songkhla
 - Singapore
 - Labuan
 - Jakarta

Introduction

Established in 1999, our Group is an integrated manufacturer of tools and components as well as a provider of service solutions to the oil and gas industry.

We offer critical turnkey manufacturing support and ancillary services (such as repair and maintenance, rental and trading of various tools and components) to international oil and gas service companies, drilling contractors, tool rental companies, and oil majors in many regions.



Manufacture

OSS engages in the turnkey manufacturing of drill string tools and components to the specifications of our customers.

We manufacture a variety of alloy steel and non-magnetic products including drill collars, integral stabilisers, sleeves and mandrels, pup joints, bent shafts, subs (such as float sub, crossover sub, saver sub, circulating sub, junk sub, etc), radial bearings, as well as housings and components for customers' M/LWD tools.

Core Machining Capabilities

- Deep Hole Boring
- Honing
- Milling
- Turning
- Threading
- Precision CNC Machining

Secondary processes:

- Phosphating
- Shot Peening
- Bead Blasting
- Cold Rolling
- Plasma Transfer Arc
- HVOF
- Laser Cladding
- Pressure Testing
- Make and Break



Drill Collar



Stabilizer



Pup Joint



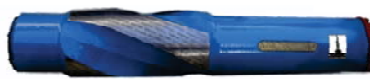
Float Sub



Crossover Sub



NM Saver Sub



Stabilizer Mandrel



Various M/LWD tools and components



Radial Bearings



Junk Mill



Sleeve



Secondary processes such as bead blasting and shot peening are done in-house to have control over quality and lead time

All items are completely inspected before being delivered with full quality documentation (material certificate, certificate of conformance, and 3rd party inspection certificate)



Surface Engineering

Hardfacing

OSS offers a complete range of hardfacing to suit all drilling conditions. Through continuous improvement, we have leveraged on our experience and technical know-how to develop expertise on wear resistance and characteristics, as well as matrix hardness. Extensive in-house research has resulted in our best-in-class application process; the increased reliability in bonding is proven by track records on the field.



HF 1000: Crushed Tungsten Carbides are fused together within a tough polycrystalline matrix of nickel. The 3mm grain size ensures greater concentration of carbide which is ideal for soft formation drilling.



HF 2000: Geothermal Dressing: trapezoidal tungsten carbide inserts are held in a sintered carbide nickel bronze matrix. This will give a greater depth of carbide coverage – ideal for high deviation drilling in abrasive formations.



HF 3000: Metal Powder spray is used to fuse the tungsten carbides. This spray deposit is ideal for abrasive formations. Recommended for non-magnetic stabilizers



HF 5000: Flexicoy Technodur: Fused tungsten carbide in a nickel chrome boron matrix designed for oxy-acetylene torch application. The matrix is pure nickel core surrounded by fused tungsten carbide and alloy elements.



HF 6000: Flexicoy Technosphere & Diamond Tungsten Carbide Inserts: Diamond inserts and tungsten carbide inserts are set in a powder spray deposit – ideal for very abrasive formations.

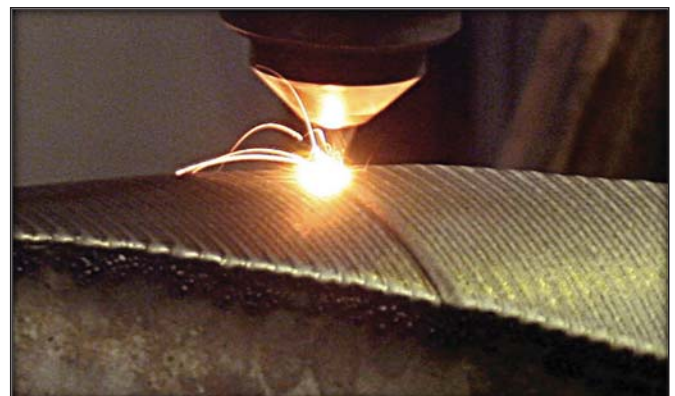


HF3K Stabilizer Blades

Advanced Technologies – High Velocity Oxy-Fuel, Twin Wire Arc Spray & Laser Cladding
Applicable to both rework and new manufacture, these coatings and overlays impart improved performance of the desired characteristics such as wear, sliding and impact resistance, corrosion protection, friction modification and other electrical properties.



Sleeve with applied HVOF undergoing final inspection on a CMM to ensure that all dimensional requirements are within tolerance.



The high power fibre diode of Laser Cladding provides precise control over heat input. Tungsten carbide, titanium, nickel, cobalt alloys etc can be applied using laser.

Servicing

Recut, Rechase and Reface

We rethread connections on tools to improve its asset utilization rate. All connections cut by OSS are gauged to ensure optimal fit and conformance to all requirements and specifications. Besides cutting API connections, the Group is also licensed for the following premium connections:

Benoit™

NOV
Grant Prideco

TenarisHydril

TPS TECHNITUBE
RÖHRENWERKE GMBH

Repair and Maintenance

With a complete suite of capabilities that ranges from machining services to surface engineering technologies, together with a breadth of relevant experience, we are able to advise and perform dynamic repair on many of our customer tools, including

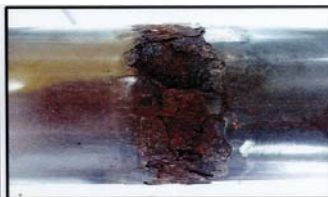
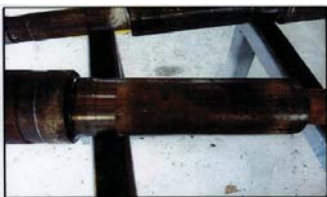
- Component teardown
- OD/ID welding
- Threads repair
- Secondary machining
- Hardfacing redress
- Surface engineering



Stabilizer blades to be redressed



Port Hole / Island Window repair



HVOF can be used to repair OD surface pitting



Twin Wire Arc Spray and final machining to repair a damaged Kelly Mandrel

Contact



Singapore (Headquarters)

No. 20 Tuas Ave 10
Singapore 639144
Tel : +65 6542 5933
Fax: +65 6542 6355

Mumbai, India

L39, MIDC Taloja, Dist.
Raigad New Mumbai,
India 410208
Tel: +91 22274 01944

Tianjin, China

No. 49 Muning Road
Tianjin Economic & Technological
Development Area
Tanggu, Tianjin, PRC 300457
Tel: +86 22 25321691 / 59845210

Labuan, Malaysia

Lot CG205002026 Kampung Sg Keling
Jalan Ranche Ranche
87000 Wilayah Persekutuan Labuan
Tel: +60 87 582885 / 583885

Jakarta, Indonesia

Jl Cikunir Raya RT 003/011
Jatimeka Jatiasih, Bekasi Jawa Barat
Jakarta 17412, Indonesia
Tel: +62 21 8211257

Songkhla, Thailand

235/57 Moo2 Lopburi-Ramate Road
Tambol Pawong Ampure Muang
Songkhla 90100 Thailand
Tel: +66 0 74333587

Aktau, Kazakhstan

Building 91/2, Industrial Zone 6
Mangistau Region, Aktau
Republic of Kazakhstan
Tel: +7 7292 54 47 50

Manufacture, Servicing, Surface Engineering, Rental and Asset Management of
Bottom-Hole-Assembly Tools and Directional Drilling Equipment



OILFIELD SERVICES & SUPPLIES
Assuring Our Best Services At All Times

<http://www.ossapi.com>

kay@ossapi.com | kenneth@ossapi.com | sales@ossapi.com